

THIS INSTRUMENT WAS PREPARED BY
EDWARD D. GIACOLETTI
REGISTERED LAND SURVEYOR - INDIANA #50560
THE SCHNEIDER CORPORATION
HISTORIC FORT HARRISON
8901 OTIS AVENUE
INDIANAPOLIS, INDIANA 46216-1037
TELEPHONE (317) 826-7100

CLAYBOURNE

SECTION 2
SECONDARY PLAT
PART OF THE N.E. 1/4 OF SECTION 30-T18N-R3E
HAMILTON COUNTY, INDIANA

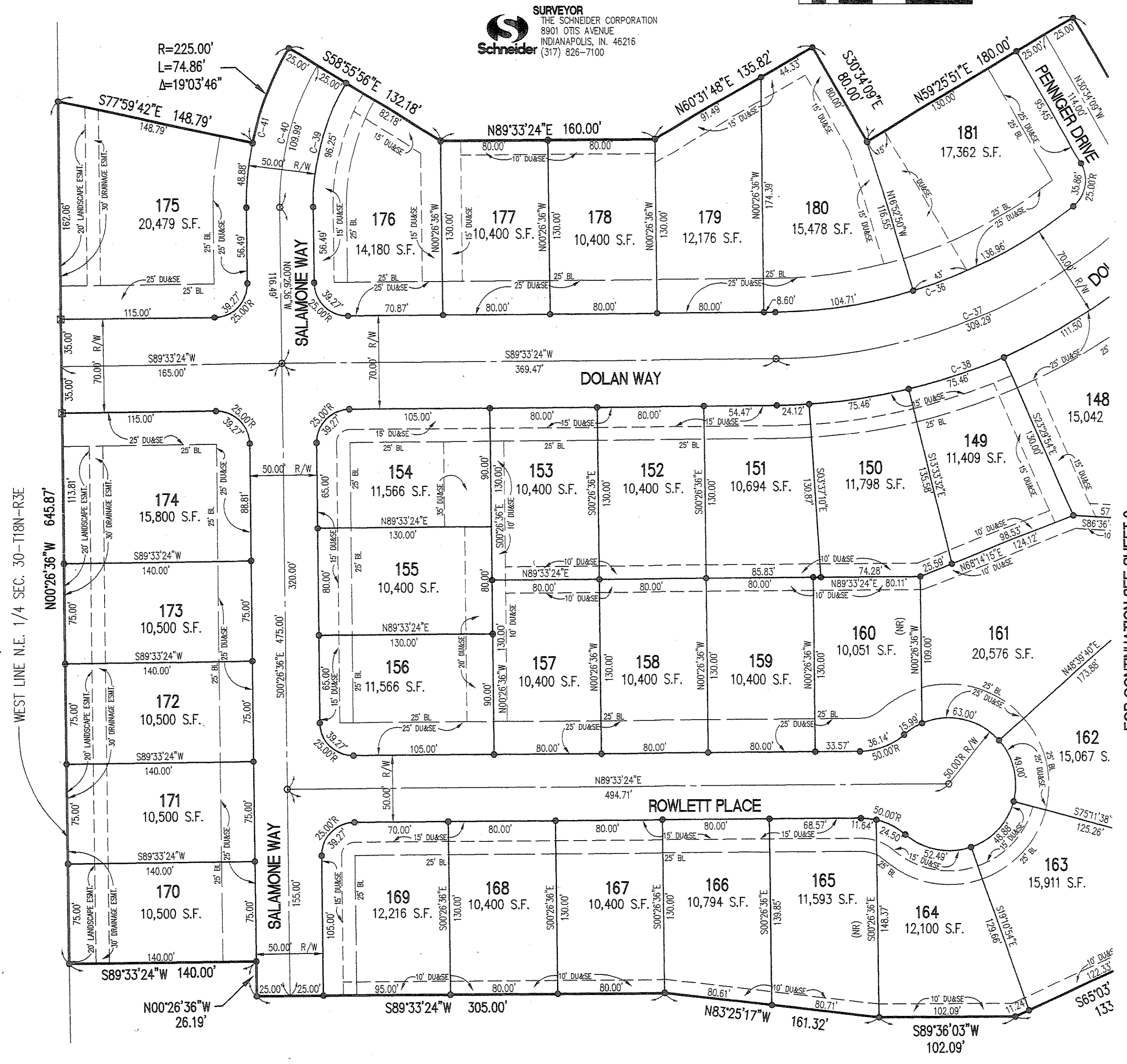
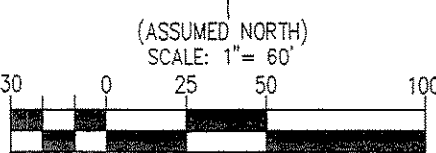
FOR CURVE DATA SEE SHEET 6
FOR LAND DESC. SEE SHEET 7

OWNER/SUBDIVIDER
BOOMERANG DEVELOPMENT, LLC
1911 LAKESIDE DRIVE
FISHERS, INDIANA 46038
(317) 849-7607

SURVEYOR
THE SCHNEIDER CORPORATION
8901 OTIS AVENUE
INDIANAPOLIS, IN. 46216
(317) 826-7100

LEGEND

- INDICATES 4" x 4" CONCRETE MONUMENT 3/4" IN LENGTH WITH "4" CAST TO BE SET
- INDICATES 5/8" DIA. ALUMINUM SHAWT WITH 1-1/2" DIA. ALUMINUM HEAD CAP STAMPED "SCHNEIDER FIRM #000" TO BE SET
- INDICATES 5/8" REBAR - 3/4" IN LENGTH WITH SURVEYOR'S IDENTIFICATION CAP TO BE SET
- BUILDING LINE
- SQUARE FOOTAGE
- DRAINAGE UTILITY AND SEWER EASEMENT
- (R/W) NON-RADIAL
- R/W RIGHT-OF-WAY



FOR CONTINUATION SEE SHEET 3

SHEET 5 OF 7
JOB # 3690.002 08/15/03
R:\36\3690\002\DWG\002B5.dwg

CLAYBOURNE

SECTION 2
SECONDARY PLAT
PART OF THE N.E. 1/4 OF SECTION 30-T18N-R3E
HAMILTON COUNTY, INDIANA

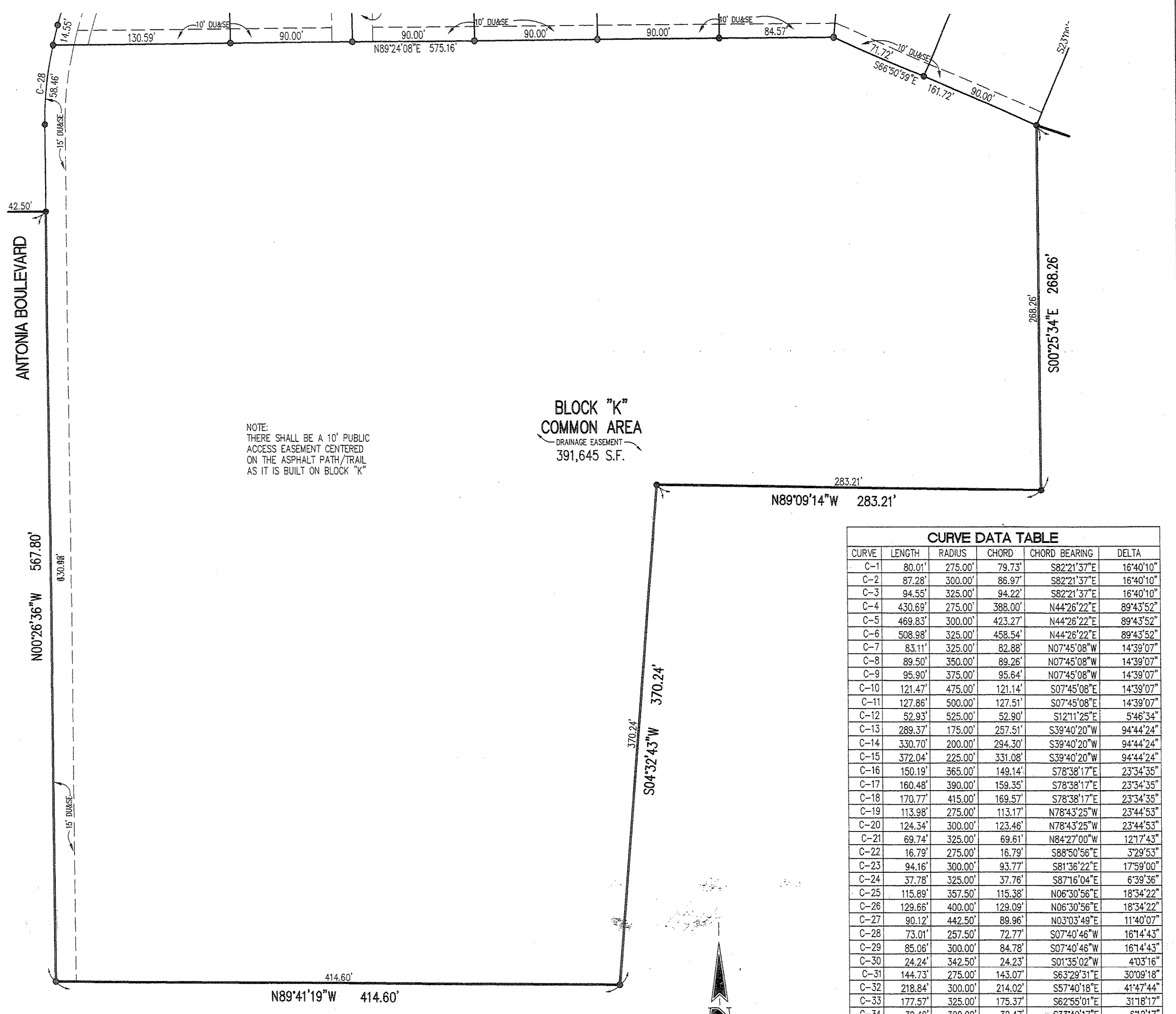
THIS INSTRUMENT WAS PREPARED BY
EDWARD D. GIACOLETTI
REGISTERED LAND SURVEYOR - INDIANA #50560
THE SCHNEIDER CORPORATION
HISTORIC FORT HARRISON
8901 OTIS AVENUE
INDIANAPOLIS, INDIANA 46216-1037
TELEPHONE (317) 826-7100

LEGEND

- INDICATES 4" x 4" CONCRETE MONUMENT 3/4" IN LENGTH WITH "4" CAST TO BE SET
- INDICATES 5/8" DIA. ALUMINUM SHAWT WITH 1-1/2" DIA. ALUMINUM HEAD CAP STAMPED "SCHNEIDER FIRM #000" TO BE SET
- INDICATES 5/8" REBAR - 3/4" IN LENGTH WITH SURVEYOR'S IDENTIFICATION CAP TO BE SET
- BUILDING LINE
- SQUARE FOOTAGE
- DRAINAGE UTILITY AND SEWER EASEMENT
- (R/W) NON-RADIAL
- R/W RIGHT-OF-WAY

FOR CONTINUATION SEE SHEET 3

FOR CONTINUATION SEE SHEET 3 AND 4



NOTE: THERE SHALL BE A 10' PUBLIC ACCESS EASEMENT CENTERED ON THE ASPHALT PATH/TRAIL AS IT IS BUILT ON BLOCK "K"

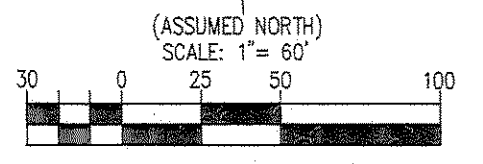
BLOCK "K"
COMMON AREA
DRAINAGE EASEMENT
391,645 S.F.

CURVE	LENGTH	RADIUS	CHORD	BEARING	DELTA
C-1	80.01'	275.00'	75.73'	S82°21'37"E	16°40'10"
C-2	87.28'	300.00'	85.97'	S82°21'37"E	16°40'10"
C-3	94.55'	325.00'	94.22'	S82°21'37"E	16°40'10"
C-4	430.69'	275.00'	386.00'	N44°26'22"E	89°43'52"
C-5	469.83'	300.00'	423.27'	N44°26'22"E	89°43'52"
C-6	508.98'	325.00'	458.54'	N44°26'22"E	89°43'52"
C-7	83.11'	325.00'	82.88'	N07°45'08"W	14°39'07"
C-8	89.50'	350.00'	89.26'	N07°45'08"W	14°39'07"
C-9	95.90'	375.00'	95.64'	N07°45'08"W	14°39'07"
C-10	121.47'	475.00'	121.14'	S07°45'08"E	14°39'07"
C-11	127.86'	500.00'	127.51'	S07°45'08"E	14°39'07"
C-12	52.93'	525.00'	52.90'	S12°11'26"E	5°46'34"
C-13	289.37'	175.00'	257.51'	S39°40'20"W	94°44'24"
C-14	330.70'	200.00'	284.30'	S39°40'20"W	94°44'24"
C-15	372.04'	225.00'	331.08'	S39°40'20"W	94°44'24"
C-16	150.19'	365.00'	149.14'	S78°38'17"E	23°34'35"
C-17	160.48'	390.00'	159.35'	S78°38'17"E	23°34'35"
C-18	170.77'	415.00'	169.57'	S78°38'17"E	23°34'35"
C-19	113.98'	275.00'	113.17'	N78°43'25"W	23°44'53"
C-20	124.34'	300.00'	123.46'	N78°43'25"W	23°44'53"
C-21	69.74'	325.00'	69.61'	N84°27'00"W	12°17'43"
C-22	16.79'	275.00'	16.79'	S88°50'56"E	3°28'53"
C-23	94.16'	300.00'	93.77'	S81°36'22"E	17°59'00"
C-24	37.78'	325.00'	37.76'	S87°16'04"E	6°39'36"
C-25	115.89'	357.50'	115.38'	N08°30'36"E	18°34'22"
C-26	129.68'	400.00'	129.09'	N08°30'36"E	18°34'22"
C-27	80.12'	442.50'	80.96'	N03°33'49"E	11°40'07"
C-28	73.01'	257.50'	72.77'	S07°40'46"W	16°14'43"
C-29	85.06'	300.00'	84.78'	S07°40'46"W	16°14'43"
C-30	24.24'	342.50'	24.23'	S01°35'02"W	4°03'16"
C-31	144.73'	275.00'	143.07'	S63°29'31"E	30°09'18"
C-32	218.84'	300.00'	214.02'	S57°40'18"E	41°47'44"
C-33	177.57'	325.00'	175.57'	S62°50'01"E	31°18'17"
C-34	32.49'	300.00'	32.47'	S33°40'17"E	6°12'17"
C-35	34.40'	400.00'	34.39'	N42°47'27"E	4°55'37"
C-36	241.67'	355.00'	237.28'	N70°35'18"E	37°56'12"
C-37	509.28'	400.00'	301.64'	N67°24'20"E	44°18'08"
C-38	286.54'	435.00'	281.39'	N07°41'10"E	37°44'28"
C-39	96.25'	175.00'	95.04'	S15°18'44"W	31°30'40"
C-40	109.89'	200.00'	108.61'	S15°18'44"W	31°30'40"
C-41	123.74'	225.00'	122.19'	S15°18'44"W	31°30'40"

OWNER/SUBDIVIDER
BOOMERANG DEVELOPMENT, LLC
1911 LAKESIDE DRIVE
FISHERS, INDIANA 46038
(317) 849-7607

SURVEYOR
THE SCHNEIDER CORPORATION
8901 OTIS AVENUE
INDIANAPOLIS, IN. 46216
(317) 826-7100

FOR LAND DESC. SEE SHEET 7



SHEET 6 OF 7
JOB # 3690.002 08/15/03
R:\36\3690\002\DWG\002B5.dwg