

CLAYBOURNE

SECTION 2

SECONDARY PLAT

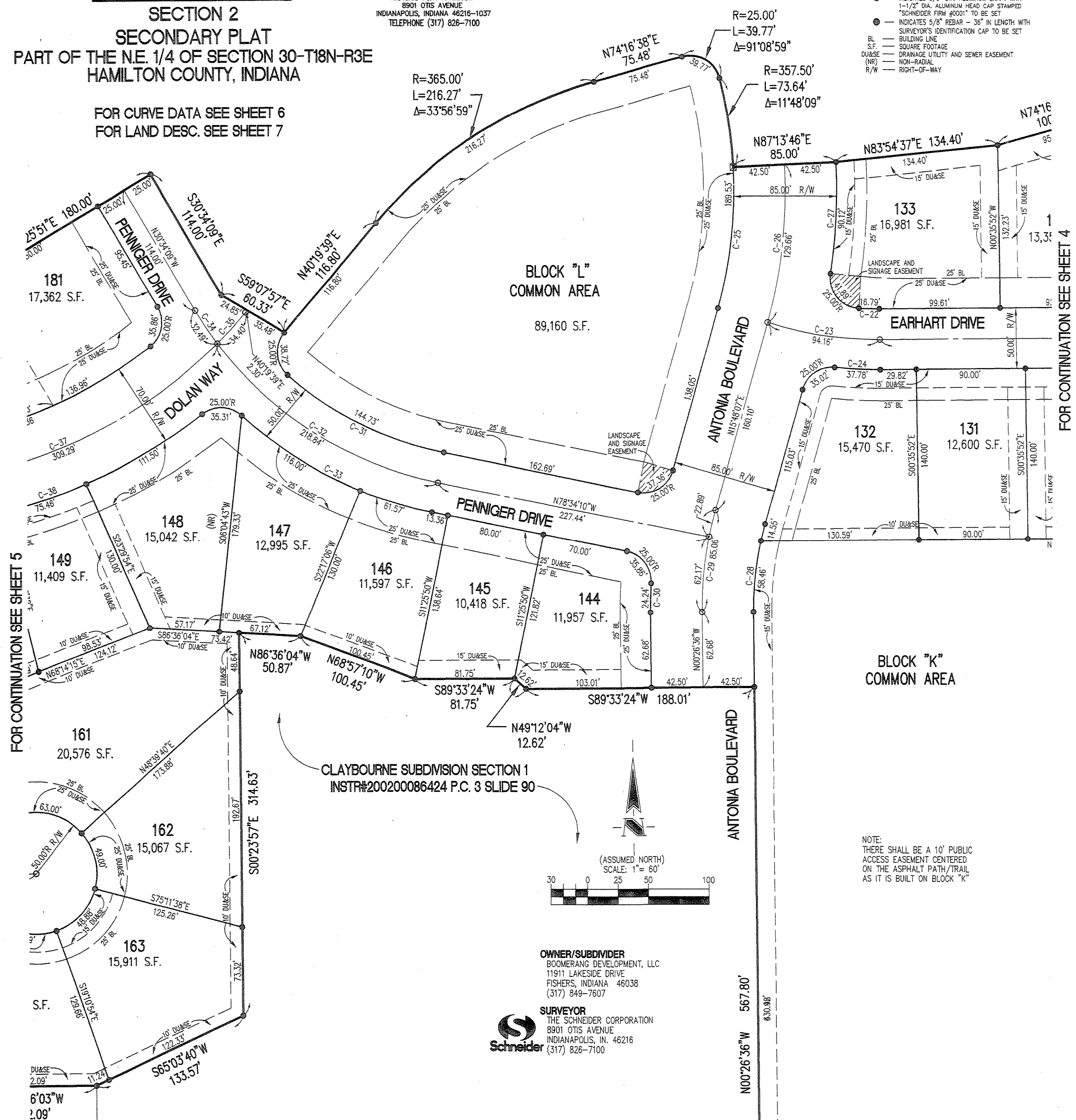
PART OF THE N.E. 1/4 OF SECTION 30-T18N-R3E
HAMILTON COUNTY, INDIANA

FOR CURVE DATA SEE SHEET 6
FOR LAND DESC. SEE SHEET 7

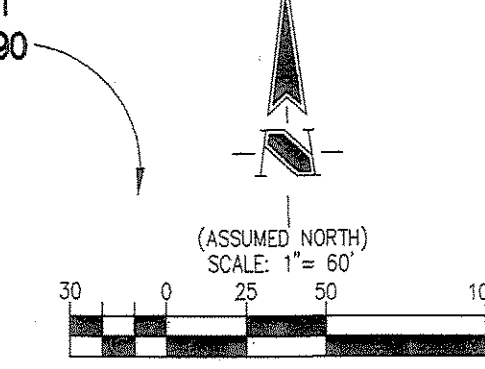
THIS INSTRUMENT WAS PREPARED BY
EDWARD D. GIACOLETTI
REGISTERED LAND SURVEYOR - INDIANA #52560
THE SCHNEIDER CORPORATION
HISTORIC FORT HARRISON
8901 OTIS AVENUE
INDIANAPOLIS, INDIANA 46216-1037
TELEPHONE (317) 826-7100

LEGEND

- INDICATES 4" x 4" CONCRETE MONUMENT 36" IN LENGTH WITH "4" CAST TO BE SET
- INDICATES 5/8" DIA. ALUMINUM SHAFT WITH 1-1/2" DIA. ALUMINUM HEAD CAP STAMPED "SCHNEIDER FIRM #000" TO BE SET
- INDICATES 5/8" REBAR - 36" IN LENGTH WITH SURVEYOR'S IDENTIFICATION CAP TO BE SET
- BL - BUILDING LINE
- S.F. - SQUARE FOOTAGE
- D.U. - DRAINAGE UTILITY AND SEWER EASEMENT
- (NR) - NON-RADIAL
- R/W - RIGHT-OF-WAY



CLAYBOURNE SUBDIVISION SECTION 1
INSTR#200200086424 P.C. 3 SLIDE 90



OWNER/SUBDIVIDER
BOOMERANG DEVELOPMENT, LLC
11911 LAKESIDE DRIVE
FISHERS, INDIANA 46038
(317) 849-7607

SURVEYOR
THE SCHNEIDER CORPORATION
8901 OTIS AVENUE
INDIANAPOLIS, IN. 46216
(317) 826-7100

FOR CONTINUATION SEE SHEET 6 SHEET 3 OF 7
JOB # 3690.002 08/15/03

CLAYBOURNE

SECTION 2

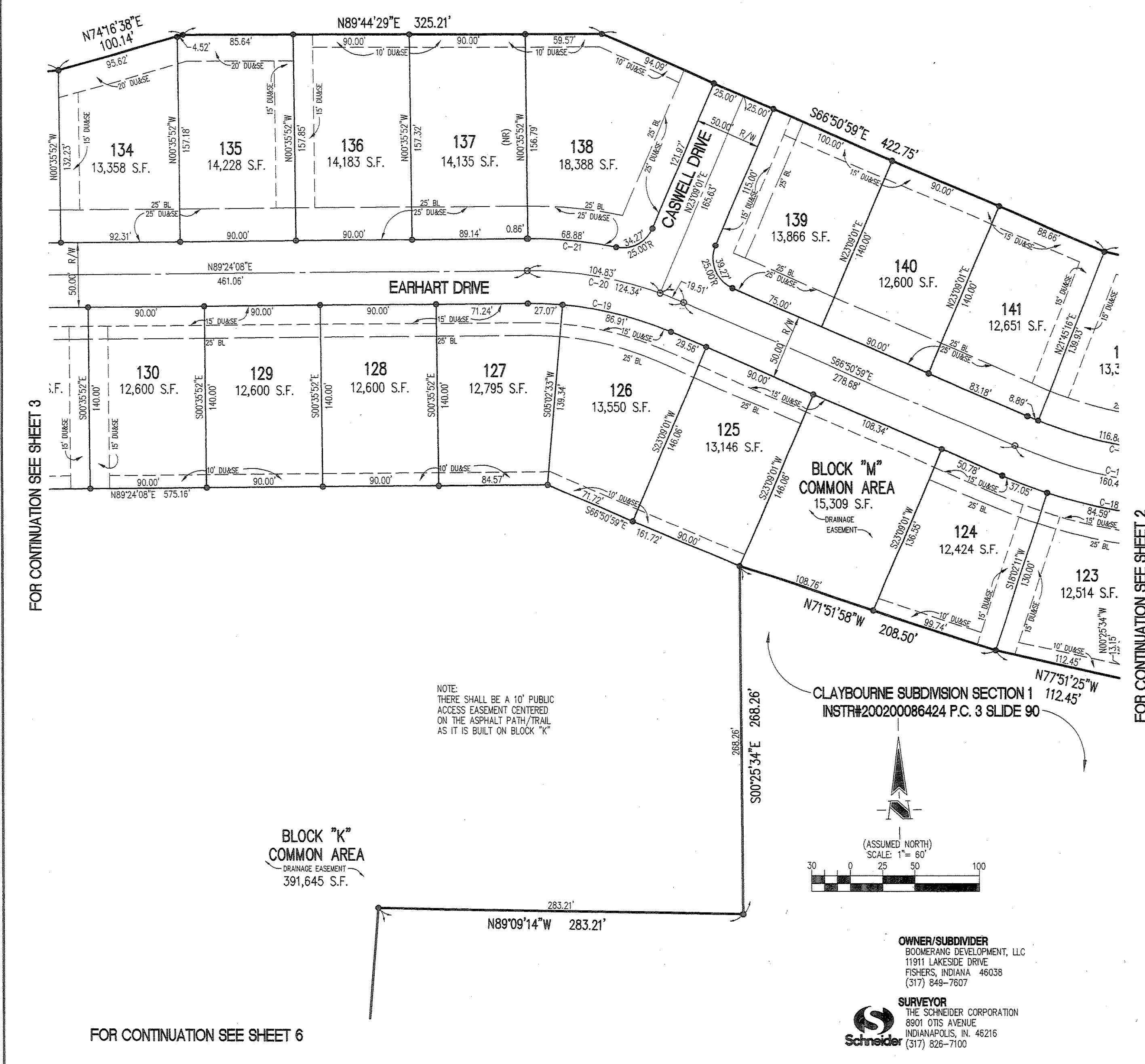
PART OF THE N.E. 1/4 OF SECTION 30-T18N-R3E
HAMILTON COUNTY, INDIANA

FOR CURVE DATA SEE SHEET 6
FOR LAND DESC. SEE SHEET 7

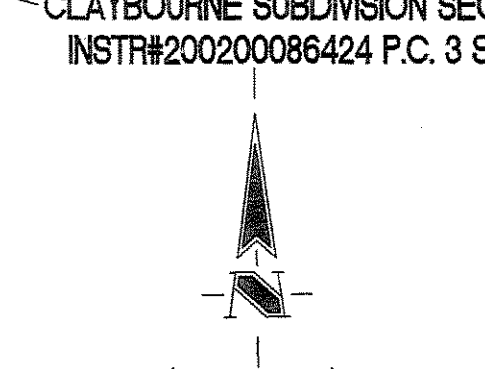
THIS INSTRUMENT WAS PREPARED BY
EDWARD D. GIACOLETTI
REGISTERED LAND SURVEYOR - INDIANA #52560
THE SCHNEIDER CORPORATION
HISTORIC FORT HARRISON
8901 OTIS AVENUE
INDIANAPOLIS, INDIANA 46216-1037
TELEPHONE (317) 826-7100

LEGEND

- INDICATES 4" x 4" CONCRETE MONUMENT 36" IN LENGTH WITH "4" CAST TO BE SET
- INDICATES 5/8" DIA. ALUMINUM SHAFT WITH 1-1/2" DIA. ALUMINUM HEAD CAP STAMPED "SCHNEIDER FIRM #000" TO BE SET
- INDICATES 5/8" REBAR - 36" IN LENGTH WITH SURVEYOR'S IDENTIFICATION CAP TO BE SET
- BL - BUILDING LINE
- S.F. - SQUARE FOOTAGE
- D.U. - DRAINAGE UTILITY AND SEWER EASEMENT
- (NR) - NON-RADIAL
- R/W - RIGHT-OF-WAY



CLAYBOURNE SUBDIVISION SECTION 1
INSTR#200200086424 P.C. 3 SLIDE 90



OWNER/SUBDIVIDER
BOOMERANG DEVELOPMENT, LLC
11911 LAKESIDE DRIVE
FISHERS, INDIANA 46038
(317) 849-7607

SURVEYOR
THE SCHNEIDER CORPORATION
8901 OTIS AVENUE
INDIANAPOLIS, IN. 46216
(317) 826-7100

FOR CONTINUATION SEE SHEET 6 SHEET 4 OF 7
JOB # 3690.002 08/15/03