

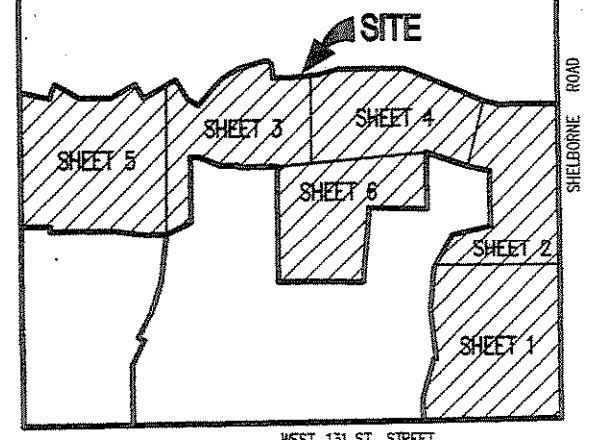
PC 3 Slide 8a1

# CLAYBOURNE

PRIMARY PLAT DOCKET # 119-01-PP  
SECONDARY PLAT DOCKET # 103-03-SP

SECTION 2  
SECONDARY PLAT  
PART OF THE N.E. 1/4 OF SECTION 30-T18N-R3E  
HAMILTON COUNTY, INDIANA

- LEGEND**
- INDICATES 4" X 4" CONCRETE MONUMENT 36" IN LENGTH WITH "4" CAST TO BE SET
  - INDICATES 5/8" DIA. ALUMINUM SHAFI WITH 1-1/2" DIA. ALUMINUM HEAD CAP STAMPED "SCHNEIDER FROM #000" TO BE SET
  - INDICATES 5/8" REBAR - 36" IN LENGTH WITH SURVEYOR'S IDENTIFICATION CAP TO BE SET
  - BUILDING LINE
  - SQUARE FOOTAGE
  - DRAINAGE UTILITY AND SEWER EASEMENT
  - DRAINAGE UTILITY AND SEWER EASEMENT
  - NON-RADIAL
  - RIGHT-OF-WAY



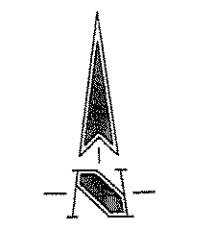
## AREA MAP

DATE OF SUBMISSION: 6/04/03  
SOURCE OF TITLE: WARRANTY DEED, INSTR# 200200008809  
FOR CURVE DATA SEE SHEET 6  
FOR LAND DESC. SEE SHEET 7

**OWNER/SUBDIVIDER**  
BODMERANG DEVELOPMENT, LLC  
1911 LAKESIDE DRIVE  
FISHERS, INDIANA 46038  
(317) 849-7607

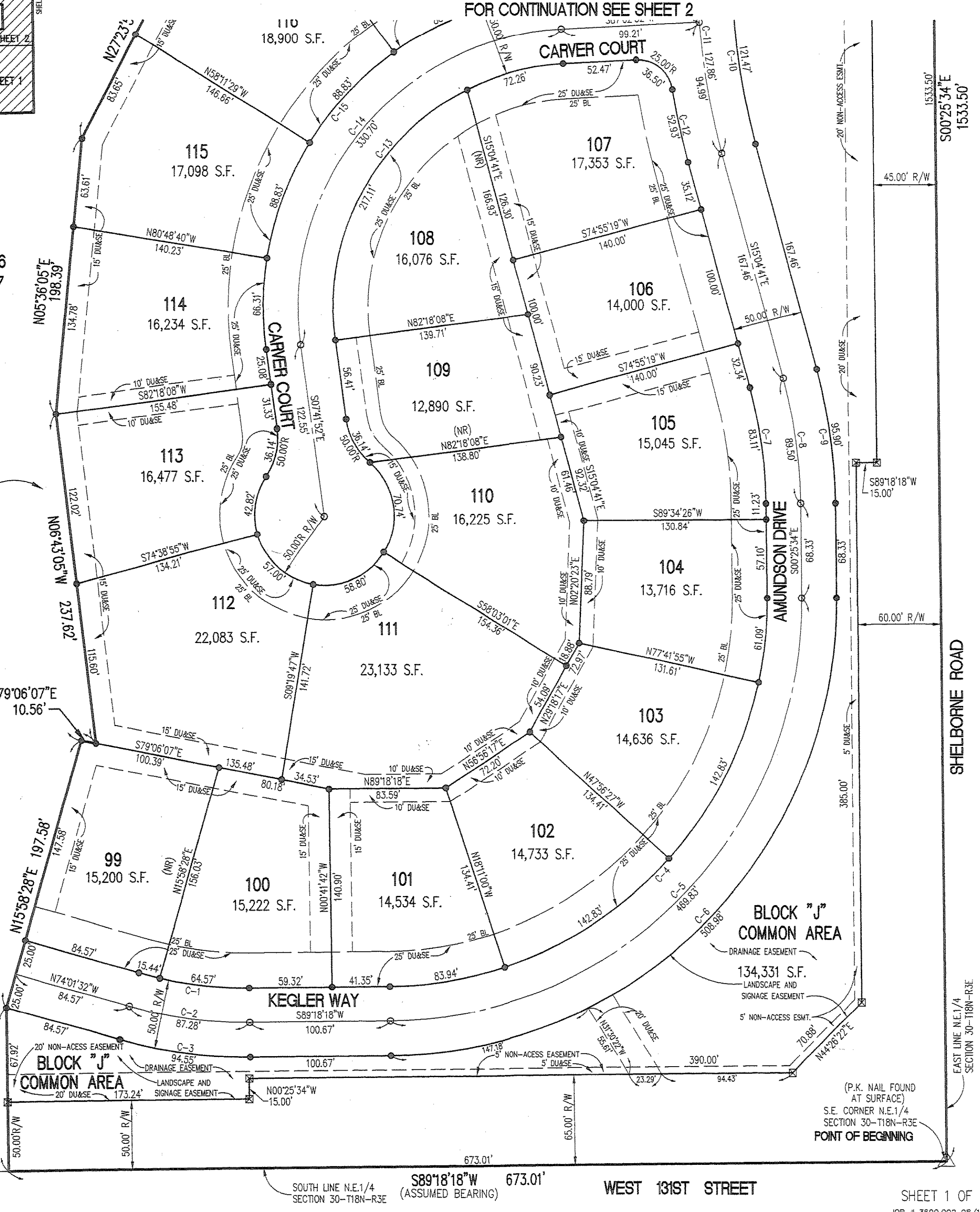
**SURVEYOR**  
THE SCHNEIDER CORPORATION  
8901 OTIS AVENUE  
INDIANAPOLIS, IN 46216  
(317) 828-7100

RECORDED IN INDIANA  
HAMILTON COUNTY  
PLAT # 103-03-SP  
INSTR# 200200008809 P.C. 3 SLIDE 80



(ASSUMED NORTH)  
SCALE: 1" = 60'

THIS INSTRUMENT WAS PREPARED BY  
EDWARD D. GRACOLETTI  
REGISTERED LAND SURVEYOR - INDIANA #05060  
THE SCHNEIDER CORPORATION  
HISTORIC FORT HARRISON  
8901 OTIS AVENUE  
INDIANAPOLIS, INDIANA 46216-1037  
TELEPHONE (317) 828-7100



(P.K. NAIL FOUND AT SURFACE)  
S.E. CORNER N.E. 1/4 SECTION 30-T18N-R3E  
POINT OF BEGINNING

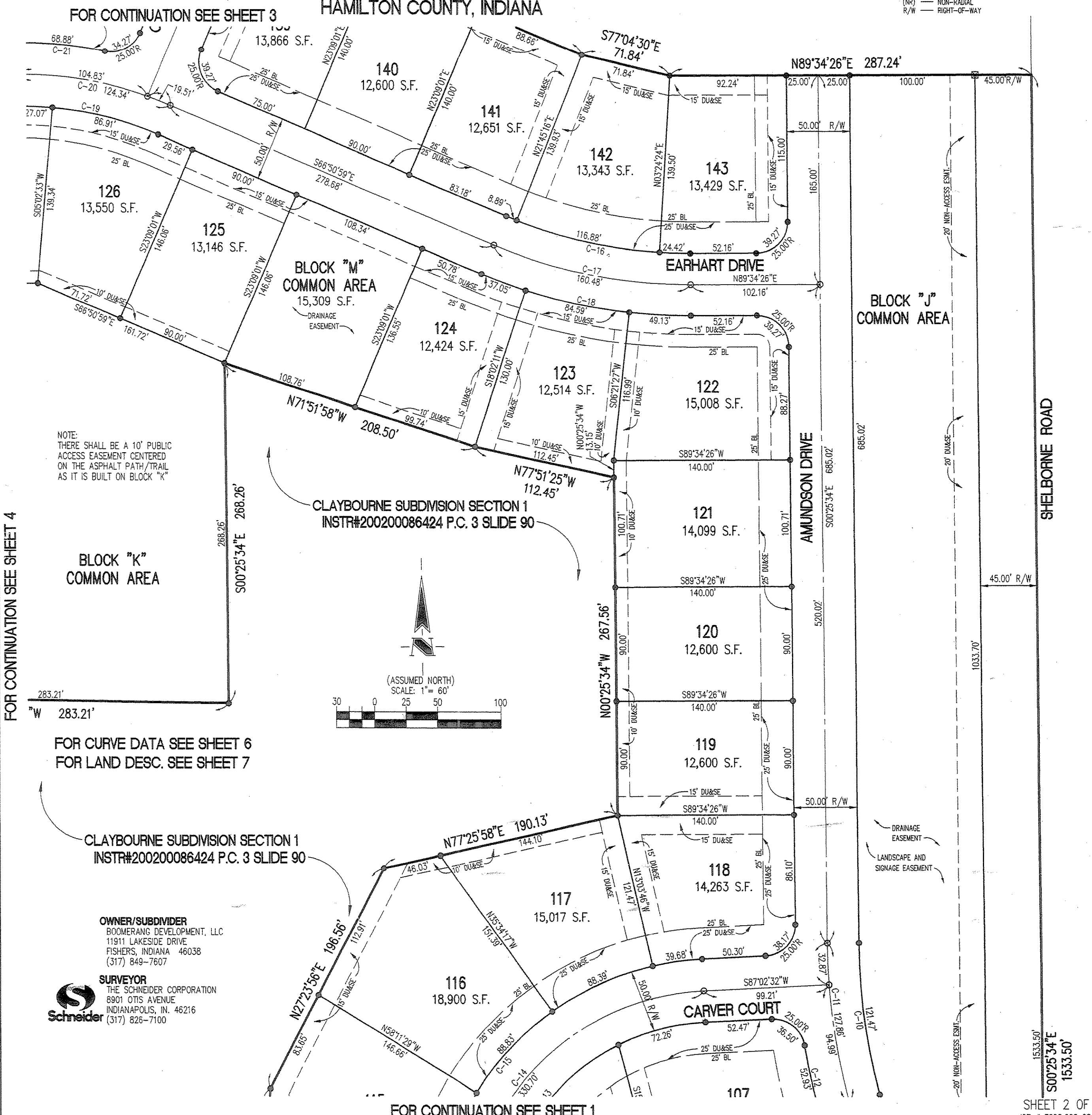
SHEET 1 OF 7  
JOB # 3890.002 08/15/03  
R:\38\3890\002\DWG5\002B5.dwg

# CLAYBOURNE

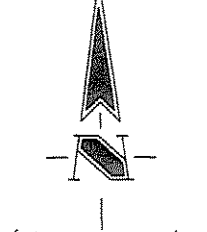
SECTION 2  
SECONDARY PLAT  
PART OF THE N.E. 1/4 OF SECTION 30-T18N-R3E  
HAMILTON COUNTY, INDIANA

THIS INSTRUMENT WAS PREPARED BY  
EDWARD D. GRACOLETTI  
REGISTERED LAND SURVEYOR - INDIANA #05060  
THE SCHNEIDER CORPORATION  
HISTORIC FORT HARRISON  
8901 OTIS AVENUE  
INDIANAPOLIS, INDIANA 46216-1037  
TELEPHONE (317) 828-7100

- LEGEND**
- INDICATES 4" X 4" CONCRETE MONUMENT 36" IN LENGTH WITH "4" CAST TO BE SET
  - INDICATES 5/8" DIA. ALUMINUM SHAFI WITH 1-1/2" DIA. ALUMINUM HEAD CAP STAMPED "SCHNEIDER FROM #000" TO BE SET
  - INDICATES 5/8" REBAR - 36" IN LENGTH WITH SURVEYOR'S IDENTIFICATION CAP TO BE SET
  - BUILDING LINE
  - SQUARE FOOTAGE
  - DRAINAGE UTILITY AND SEWER EASEMENT
  - DRAINAGE UTILITY AND SEWER EASEMENT
  - NON-RADIAL
  - RIGHT-OF-WAY



NOTE: THERE SHALL BE A 10' PUBLIC ACCESS EASEMENT CENTERED ON THE ASPHALT PATH/TRAIL AS IT IS BUILT ON BLOCK "K"



(ASSUMED NORTH)  
SCALE: 1" = 60'

**OWNER/SUBDIVIDER**  
BODMERANG DEVELOPMENT, LLC  
1911 LAKESIDE DRIVE  
FISHERS, INDIANA 46038  
(317) 849-7607

**SURVEYOR**  
THE SCHNEIDER CORPORATION  
8901 OTIS AVENUE  
INDIANAPOLIS, IN 46216  
(317) 828-7100

SHEET 2 OF 7  
JOB # 3890.002 08/15/03  
R:\38\3890\002\DWG5\002B5.dwg