

CLAYBOURNE

SECTION 1 SECONDARY PLAT PART OF THE NE. 1/4 OF SECTION 30-T18N-R3E HAMILTON COUNTY, INDIANA

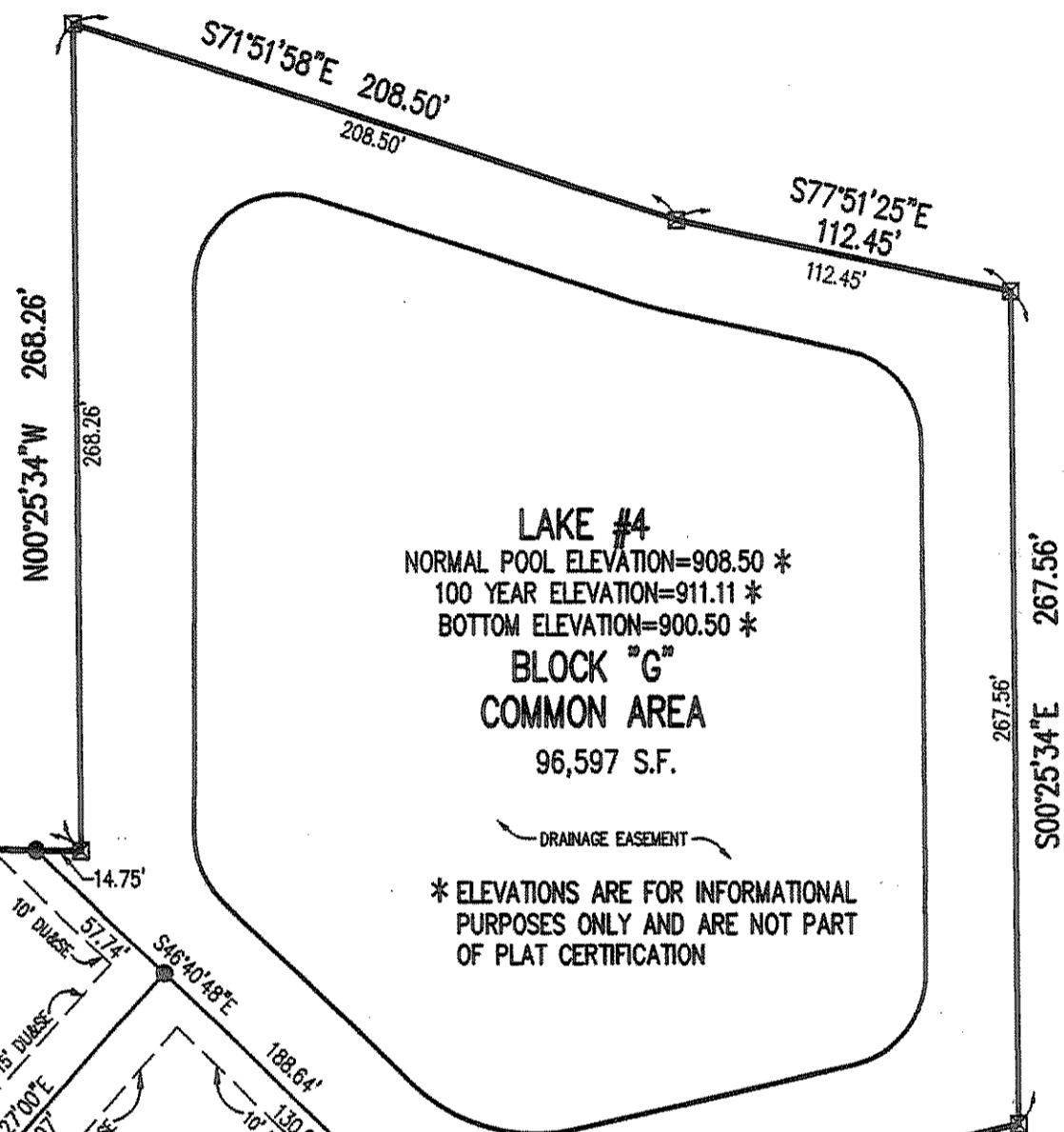
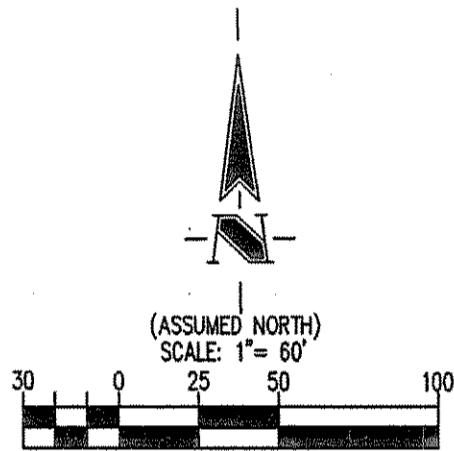
THIS INSTRUMENT WAS PREPARED BY
EDWARD D. GIACOLETTI
REGISTERED LAND SURVEYOR - INDIANA #50560
THE SCHNEIDER CORPORATION
HISTORIC FORT HARRISON
8901 OTIS AVENUE
INDIANAPOLIS, INDIANA 46216-1057
TELEPHONE (317) 826-7100

LEGEND

- ☒ INDICATES 4" X 4" CONCRETE MONUMENT 36" IN LENGTH WITH "+" CAST TO BE SET
- INDICATES 5/8" DIA. ALUMINUM SHAFT WITH 1-1/2" DIA. ALUMINUM HEAD CAP STAMPED "SCHNEIDER FIRM #0001" TO BE SET
- INDICATES 5/8" REBAR - 36" IN LENGTH WITH SURVEYOR'S IDENTIFICATION CAP TO BE SET
- BL BUILDING LINE
- S.F. SQUARE FOOTAGE
- DU&SE DRAINAGE UTILITY AND SEWER EASEMENT
- (NR) NON-RADIAL
- R/W RIGHT-OF-WAY

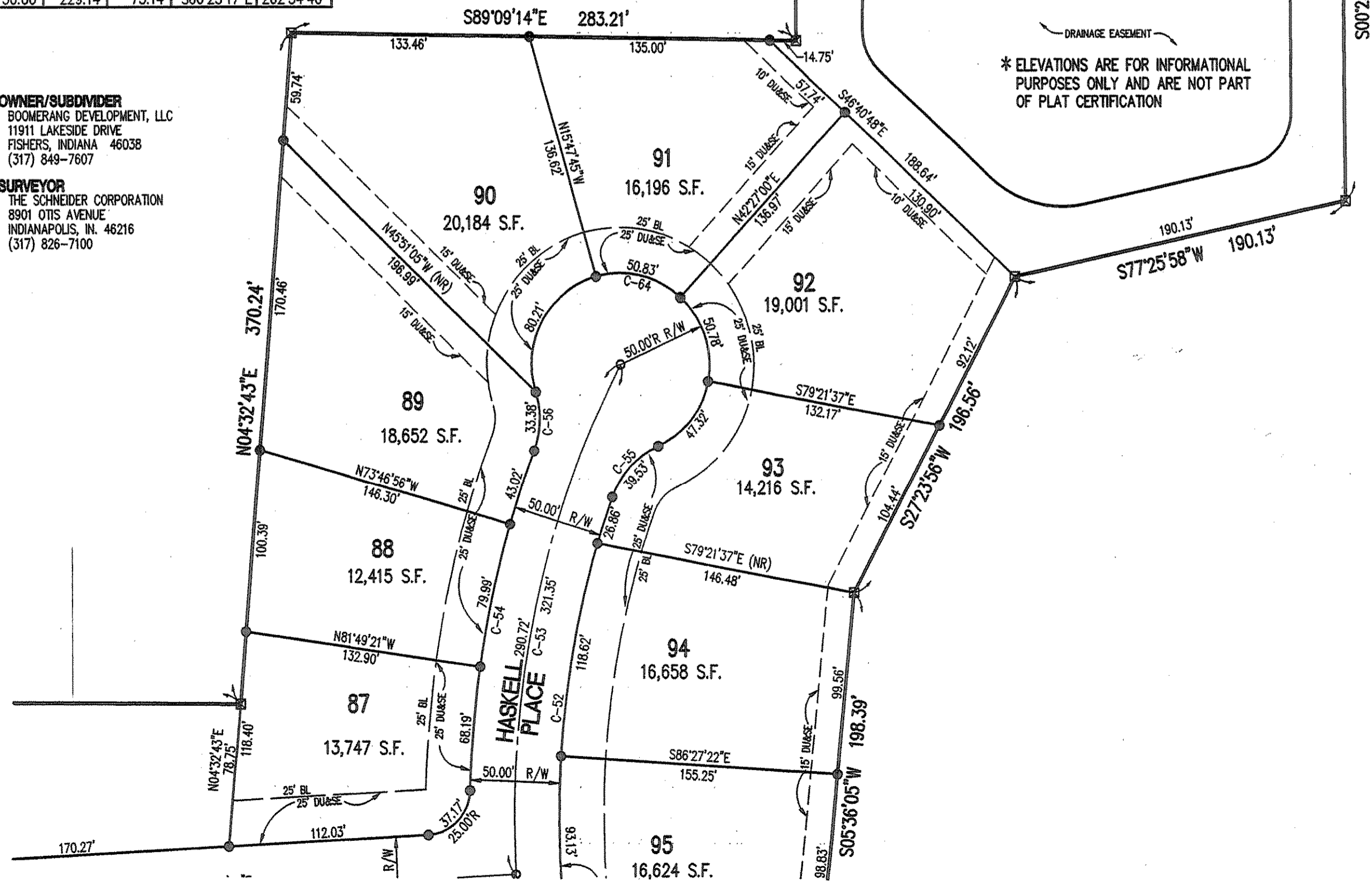
CURVE DATA TABLE					
CURVE	RADIUS	LENGTH	CHORD	DIRECTION	DELTA
C-26	257.50'	84.28'	83.90'	N08°40'53"E	18°45'09"
C-28	300.00'	98.19'	97.75'	N08°40'53"E	18°45'09"
C-30	342.50'	112.10'	111.60'	N08°40'53"E	18°45'09"
C-31	357.50'	115.44'	114.94'	N08°48'26"E	18°30'03"
C-33	400.00'	129.16'	128.60'	N08°48'26"E	18°30'03"
C-35	442.50'	95.47'	95.28'	N05°44'14"E	12°21'41"
C-36	275.00'	95.84'	95.36'	N72°26'56"W	19°58'09"
C-37	300.00'	154.26'	152.56'	N77°11'42"W	29°27'40"
C-38	325.00'	126.72'	125.92'	N73°38'03"W	22°20'23"
C-39	575.00'	95.12'	95.01'	N22°47'48"E	9°28'41"
C-40	600.00'	99.25'	99.14'	N22°47'48"E	9°28'41"
C-41	625.00'	103.39'	103.27'	N22°47'48"E	9°28'41"
C-42	175.00'	31.08'	31.04'	N12°58'11"E	10°10'33"
C-43	150.00'	80.94'	79.96'	N02°35'55"E	30°55'04"
C-44	50.00'	28.00'	27.64'	N23°55'35"E	32°05'21"
C-45	50.00'	50.20'	48.12'	N10°42'26"W	57°31'48"
C-46	775.00'	242.12'	241.14'	S82°58'32"E	17°54'00"
C-47	800.00'	249.93'	248.92'	S82°58'32"E	17°54'00"
C-48	825.00'	257.74'	256.69'	S82°58'32"E	17°54'00"
C-49	275.00'	108.92'	108.21'	N04°37'42"E	22°41'33"
C-50	300.00'	118.82'	118.04'	N04°37'42"E	22°41'33"
C-51	325.00'	128.72'	127.88'	N04°37'42"E	22°41'33"
C-52	520.00'	238.61'	236.52'	N06°25'38"E	26°17'26"
C-53	545.00'	321.35'	316.72'	N10°10'26"E	33°47'02"
C-54	570.00'	191.20'	190.31'	N10°55'59"E	19°13'11"
C-55	50.00'	39.53'	38.51'	N42°13'12"E	45°17'42"
C-56	50.00'	33.38'	32.77'	N01°24'58"E	38°15'12"
C-57	225.00'	84.65'	84.15'	S82°43'11"E	21°33'18"
C-58	250.00'	94.05'	93.50'	S82°43'11"E	21°33'18"
C-59	275.00'	103.46'	102.85'	S82°43'11"E	21°33'18"
C-60	50.00'	226.41'	76.92'	S89°45'02"E	259°26'36"
C-61	50.00'	36.14'	35.36'	S68°51'07"W	41°24'35"
C-62	50.00'	229.35'	75.00'	N00°26'36"W	262°49'09"
C-63	50.00'	36.14'	35.36'	N69°44'19"W	41°24'35"
C-64	50.00'	229.14'	75.14'	S66°25'17"E	262°34'40"

FOR LAND DESC. SEE SHEET 5



OWNER/SUBDIVIDER
BOOMERANG DEVELOPMENT, LLC
11911 LAKESIDE DRIVE
FISHERS, INDIANA 46038
(317) 849-7607

SURVEYOR
THE SCHNEIDER CORPORATION
8901 OTIS AVENUE
INDIANAPOLIS, IN. 46216
(317) 826-7100



FOR CONTINUATION SEE SHEET 2