

THIS INSTRUMENT WAS PREPARED BY  
 EDWARD D. GIACOLETTI  
 REGISTERED LAND SURVEYOR - INDIANA #50560  
 THE SCHNEIDER CORPORATION  
 HISTORIC FORT HARRISON  
 8901 OTIS AVENUE  
 INDIANAPOLIS, INDIANA 46216-1037  
 TELEPHONE (317) 826-7100

# CLAYBOURNE

## SECTION 1

### SECONDARY PLAT

#### PART OF THE NE 1/4 OF SECTION 30-T18N-R3E HAMILTON COUNTY, INDIANA

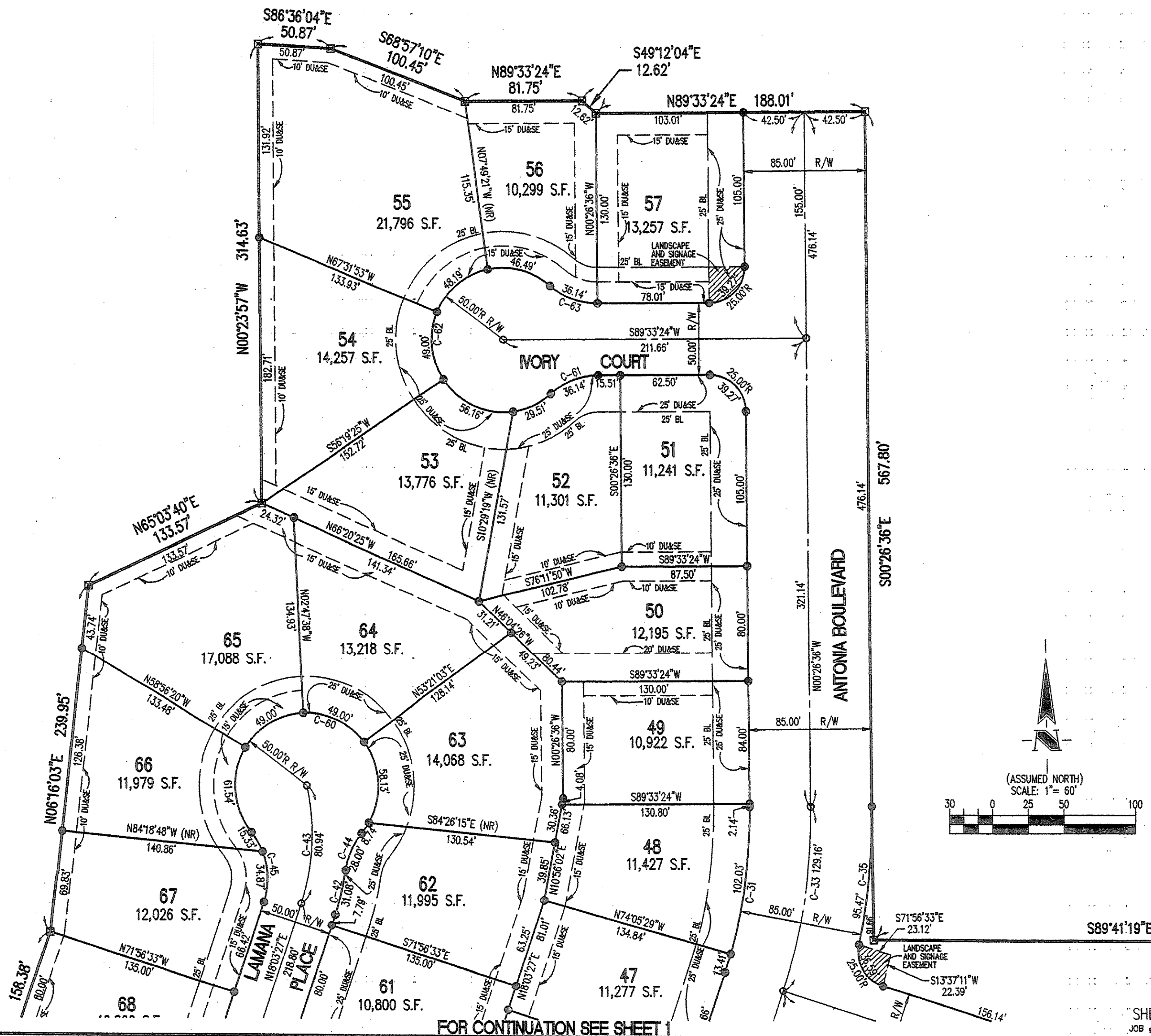


**OWNER/SUBDIVIDER**  
 BOOMERANG DEVELOPMENT, LLC  
 11911 LAKESIDE DRIVE  
 FISHERS, INDIANA 46038  
 (317) 849-7607

**SURVEYOR**  
 THE SCHNEIDER CORPORATION  
 8901 OTIS AVENUE  
 INDIANAPOLIS, IN. 46216  
 (317) 826-7100

- LEGEND**
- ☒ — INDICATES 4" X 4" CONCRETE MONUMENT 36" IN LENGTH WITH "+" CAST TO BE SET
  - — INDICATES 5/8" DIA. ALUMINUM SHAFT WITH 1-1/2" DIA. ALUMINUM HEAD CAP STAMPED "SCHNEIDER FIRM #0001" TO BE SET
  - — INDICATES 5/8" REBAR - 36" IN LENGTH WITH SURVEYOR'S IDENTIFICATION CAP TO BE SET
  - BL — BUILDING LINE
  - S.F. — SQUARE FOOTAGE
  - DU&SE — DRAINAGE UTILITY AND SEWER EASEMENT
  - (NR) — NON-RADIAL
  - R/W — RIGHT-OF-WAY

FOR CURVE DATA SEE SHEET 4  
 FOR LAND DESC. SEE SHEET 5



FOR CONTINUATION SEE SHEET 1