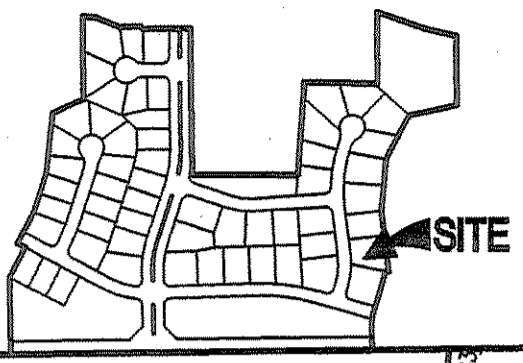


200200086424  
 Filed for Record in  
 HAMILTON COUNTY, INDIANA  
 MARY L CLARK  
 11-13-2002 03:19 pm.  
 PLAT 39.00

PC3 SLIDE 90



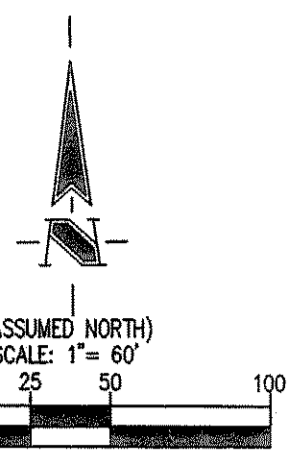
SHELBOURNE ROAD

# CLAYBOURNE

SECTION 1  
 SECONDARY PLAT  
 PART OF THE N.E. 1/4 OF  
 SECTION 30-T18N-R3E  
 HAMILTON COUNTY, INDIANA  
 PRIMARY PLAT DOCKET # 119-01-PP  
 SECONDARY PLAT DOCKET # 21-02-SP

THIS INSTRUMENT WAS PREPARED BY  
 EDWARD D. GIACOLETTI  
 REGISTERED LAND SURVEYOR - INDIANA #50560  
 THE SCHNEIDER CORPORATION  
 HISTORIC FORT HARRISON  
 8901 OTIS AVENUE  
 INDIANAPOLIS, INDIANA 46216-1037  
 TELEPHONE (317) 826-7100

DULY ENTERED FOR TAXATION  
 Subject to final acceptance for transfer  
 13<sup>th</sup> day of November, 2002  
 Robin M. Miller Auditor of Hamilton County  
 Parcel #



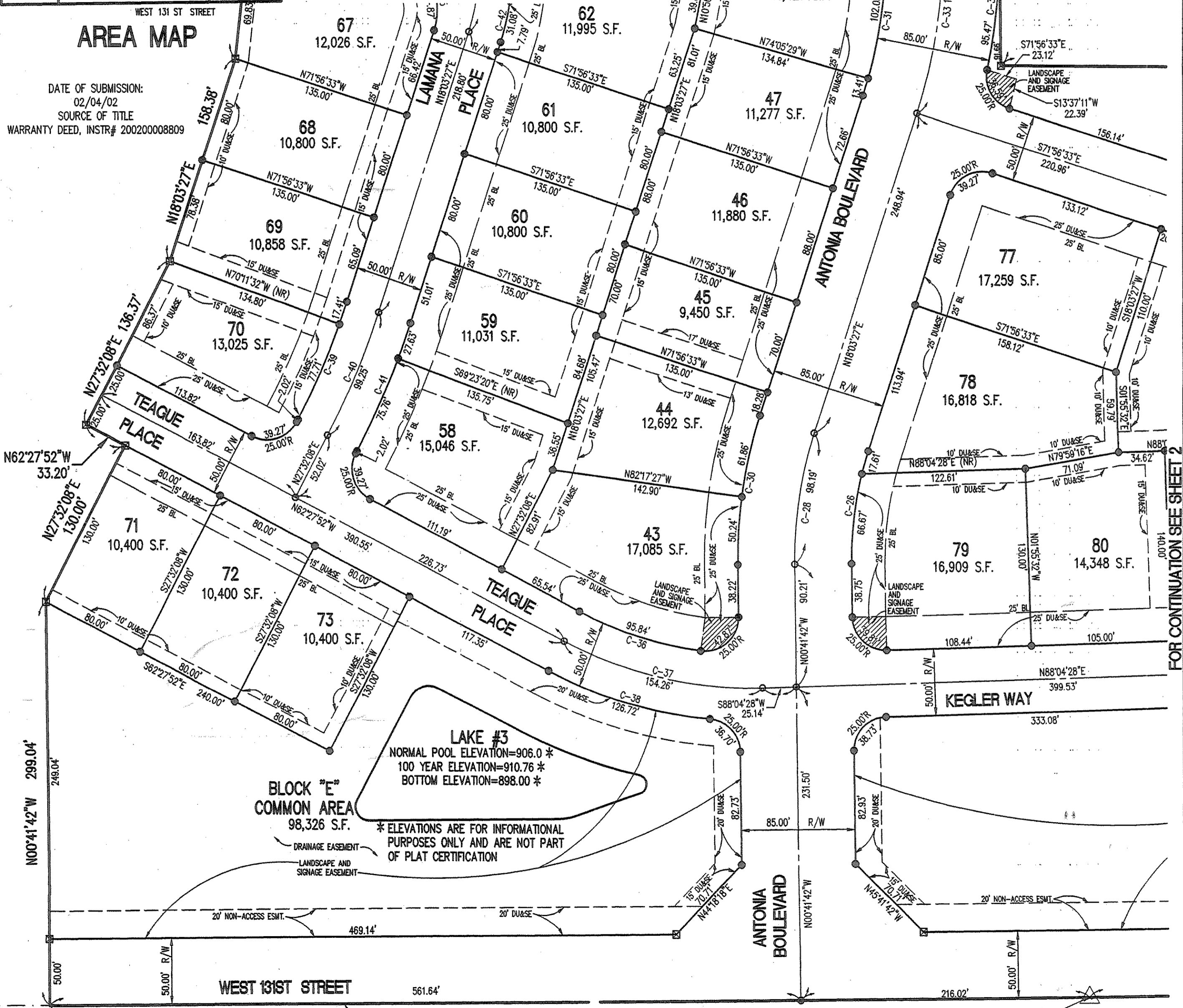
- LEGEND**
- ☒ INDICATES 4" x 4" CONCRETE MONUMENT 36" IN LENGTH WITH "+" CAST TO BE SET
  - INDICATES 5/8" DIA. ALUMINUM SHAFT WITH 1-1/2" DIA. ALUMINUM HEAD CAP STAMPED "SCHNEIDER FIRM #0001" TO BE SET
  - INDICATES 5/8" REBAR - 36" IN LENGTH WITH SURVEYOR'S IDENTIFICATION CAP TO BE SET
  - BL BUILDING LINE
  - S.F. SQUARE FOOTAGE
  - DU&SE DRAINAGE UTILITY AND SEWER EASEMENT
  - (NR) NON-RADIAL
  - R/W RIGHT-OF-WAY

**OWNER/SUBDIVIDER**  
 BOOMERANG DEVELOPMENT, LLC  
 11911 LAKESIDE DRIVE  
 FISHERS, INDIANA 46038  
 (317) 849-7607

**SURVEYOR**  
 THE SCHNEIDER CORPORATION  
 8901 OTIS AVENUE  
 INDIANAPOLIS, IN. 46216  
 (317) 826-7100

FOR CURVE DATA SEE SHEET 4  
 FOR LAND DESC. SEE SHEET 5

FOR CONTINUATION SEE SHEET 3



FOR CONTINUATION SEE SHEET 2